

EMPOWERING OUR WORLD
WITH CLEAN ENERGY



Product Catalog 2023



KSE-EN2.0-202309

Xiamen Kseng Metal Tech. Co, Ltd

Email: info@xmkseng.com | **Web:** www.xmkseng.com | **Tel:** +86 0592-5777971 / +86 0592-5795673

Office Add: 6&11F, Huixin Wealth Centre, No. 891, Fanghu North 2nd Rd., Huli Dist., Xiamen, Fujian, China.

Factory Add: No.1021-6, Xiangbei Road, Maxiang Street, Xiang'an Dist., Xiamen, Fujian, China.



CONTENT

About Kseng

01 / 02 About Kseng

Tile Roof Mounting System

03 / 04 Tile Roof Mounting System I

05 / 05 Tile Roof Mounting System IV

06 / 06 Tile Roof Mounting System V

07 / 08 Tile Roof Mounting System III

09 / 10 Tile Roof Mounting System II

11 / 12 Tile Roof Hooks

Metal Roof Mounting System

13 / 14 Standing Seam Mounting System

13 / 14 Hanger Bolt Mounting System

Flat Roof Mounting System

15 / 16 Ballast Roof Mounting System

Easy Solar Bracket/Kit

17 / 18 Adjustable Tilt Angle Easy Solar Bracket

19 / 20 Universal Easy Solar Bracket – JL V1.0

21 / 22 Universal Easy Solar Bracket/Kit

23 / 24 Balcony Easy Solar Bracket/Kit

25 / 26 Plug and Play Solar Kit

Ground Mounting System

27 / 28 Waterproof Carport Mounting System

29 / 30 Steel Ground Mounting System

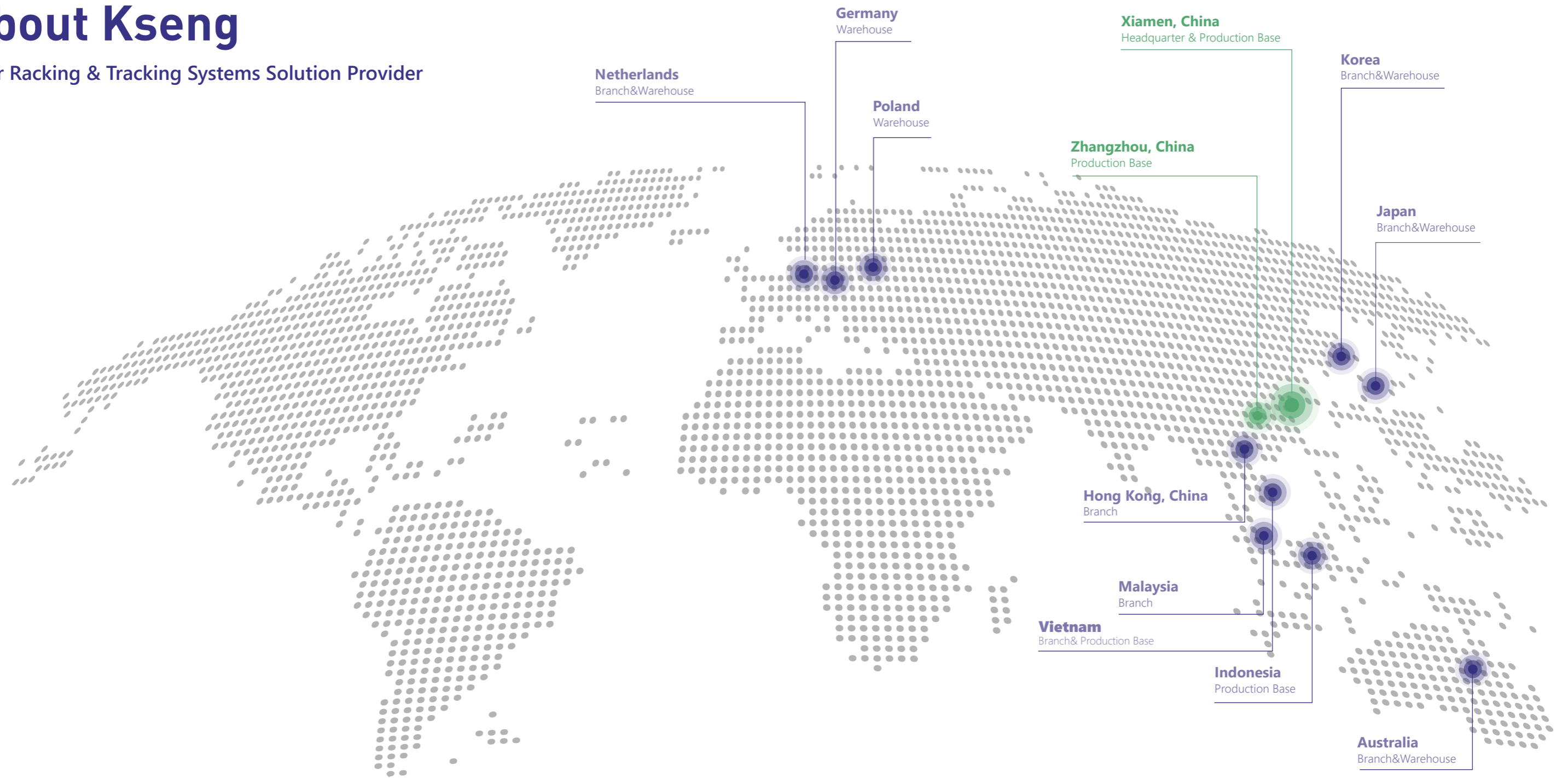
31 / 32 Energy Storage System Solution

33 / 34 Global Projects

35 / 36 Global Solar Exhibitions

About Kseng

Solar Racking & Tracking Systems Solution Provider



 **8GW**
Cumulative Shipments

 **6GW**
Annual production capacity

 **7**
Branches & Offices

 **100+**
Covered countries

 **6**
Warehouse

 **60+**
R&D engineers

 **500+**
Employees

 **2015**
Founded

Certification



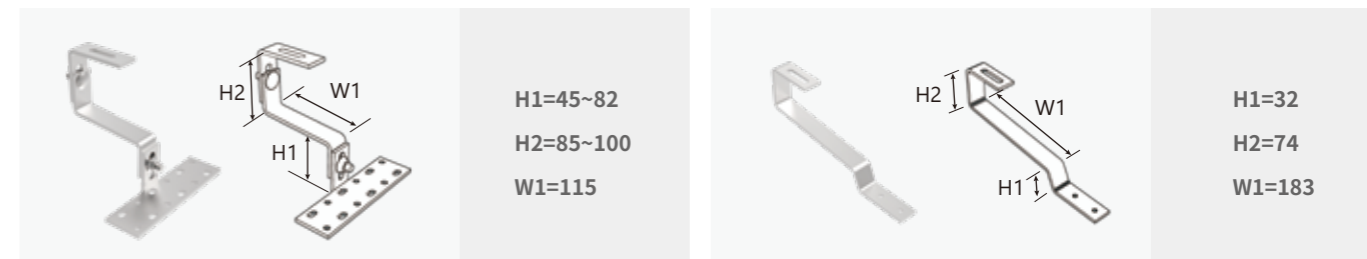


Tile Roof Mounting System I

- Creative clamp mount by push into rails directly.
- Special clamp clip could offer adjustable height.
- Fast and simple installation, precise adjust height for roofs.

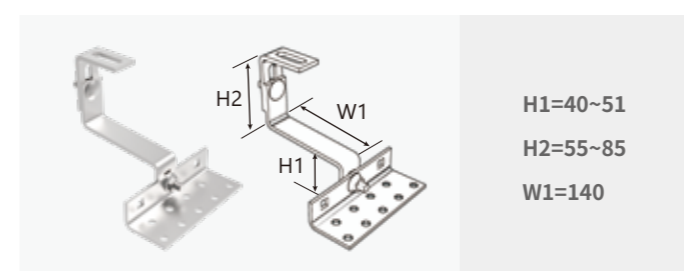
Details

Roof hook

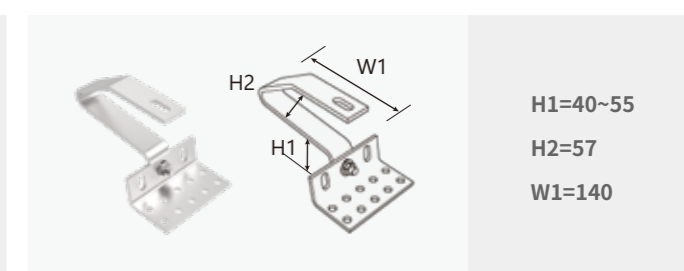


Item number	Thickness	Material
RH-304-0009	5mm	SUS 304
Roof decking	Carriage bolts	Wood screw
Tiled roof	M10*25*2	/

Item number	Thickness	Material
RH-304-0016	5mm	SUS 304
Roof decking	Carriage bolts	Wood screw
Tiled roof	/	st6.3*80mm

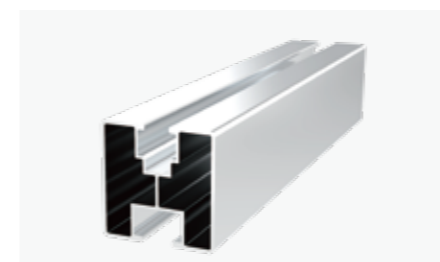


Item number	Thickness	Material
RH-304-0041	5mm	SUS 304
Roof decking	Carriage bolts	Wood screw
Tiled roof	M10*25*2	st6.3*80mm



Item number	Thickness	Material
RH-304-0802	6mm	SUS 304
Roof decking	Carriage bolts	Wood screw
Tiled roof	M10*25*1	/

Rail



Item No.	W	H	Material
RH-0059	40mm	40mm	AL 6005-T5

Various lengths available

Mid & End Clamps



Material
AL 6005-T5

Universal module clamps

Bolts and nuts



Material
SUS304

Parameters

Material: AL6005-T5, SUS304 / SUS410	Module orientation: Landscape and portrait
Surface treatment: Anodized	Applicable module thickness: 30mm-40mm
Module: Framed	Warranty: 10 years



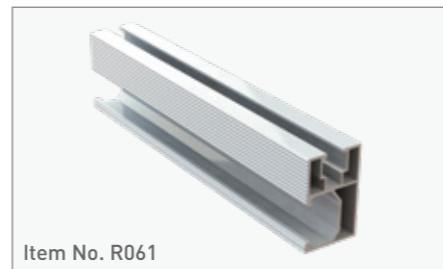
Tile Roof Mounting System IV

- ▶ Stainless steel tile hook
- ▶ Flexible adjustment for installation
- ▶ Optimal aesthetic appearance

Roof hook



Rail

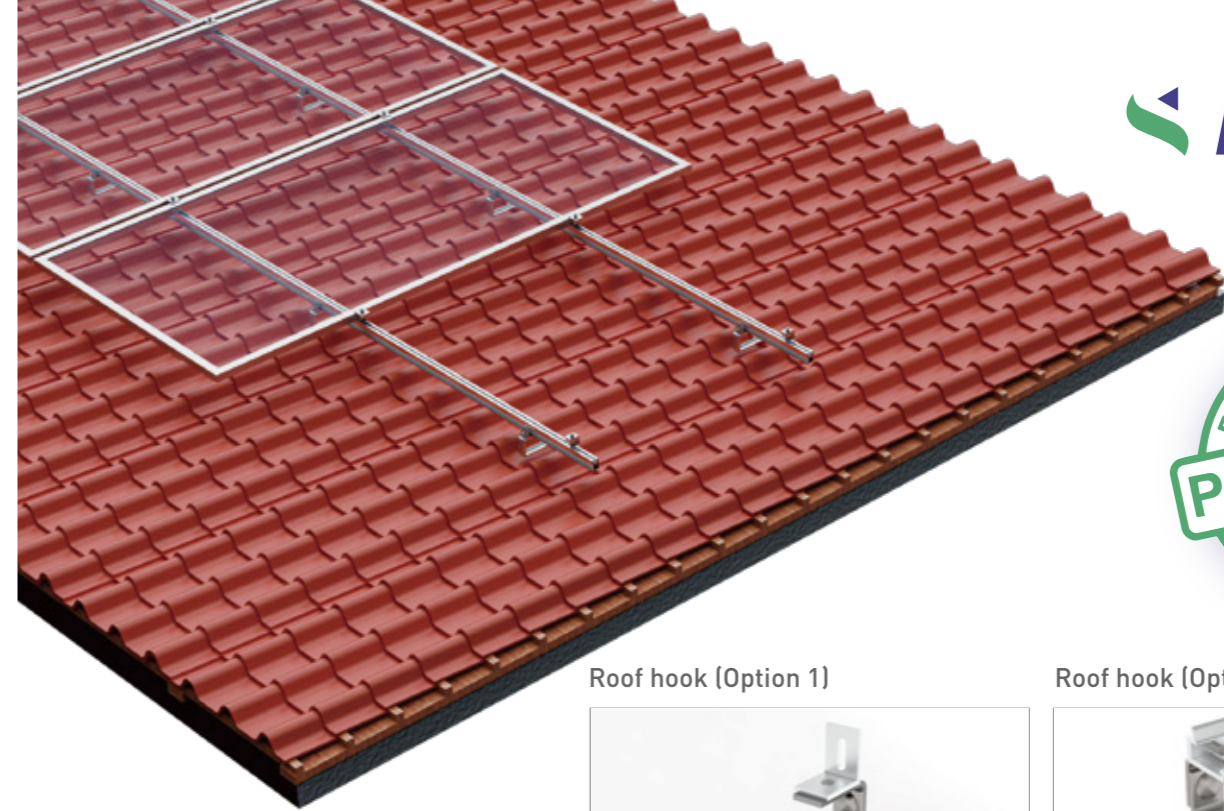
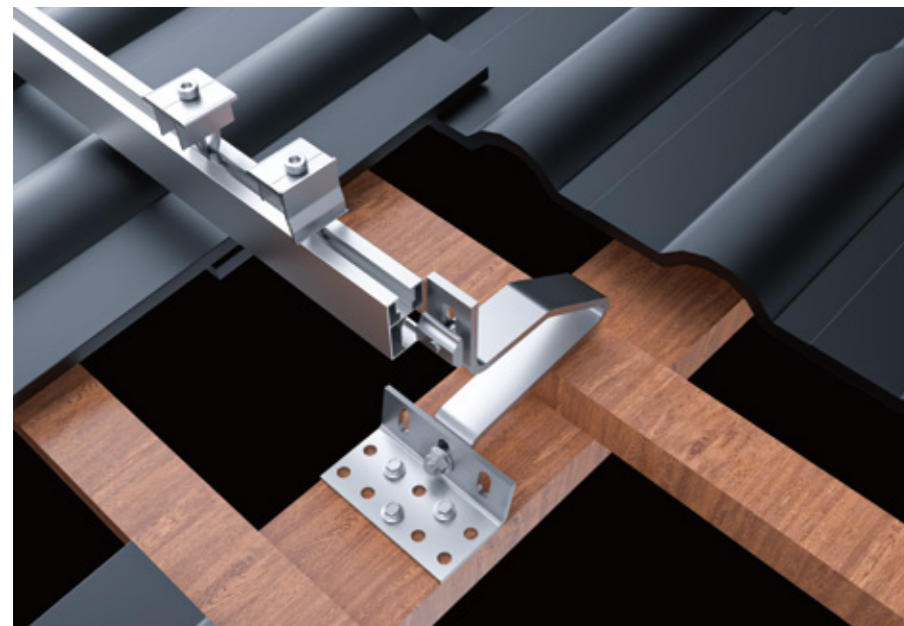
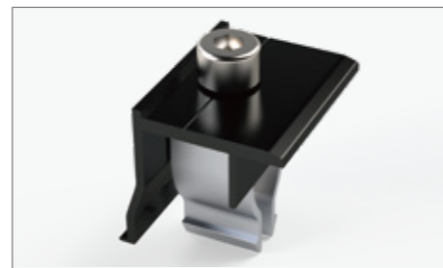


Item No. R061

Mid Clamps



End Clamps



Tile Roof Mounting System V

- ▶ Stainless steel tile hook
- ▶ Suitable for all tile roofs
- ▶ Convenient click system

Roof hook (Option 1)



Roof hook (Option 2)

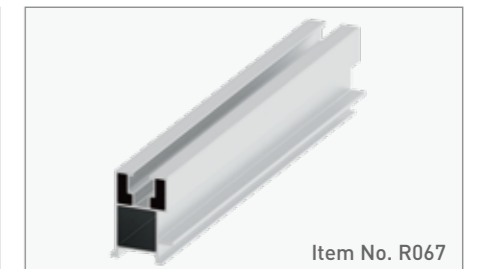


Rail (Option 1)



Item No. R061

Rail (Option 2)



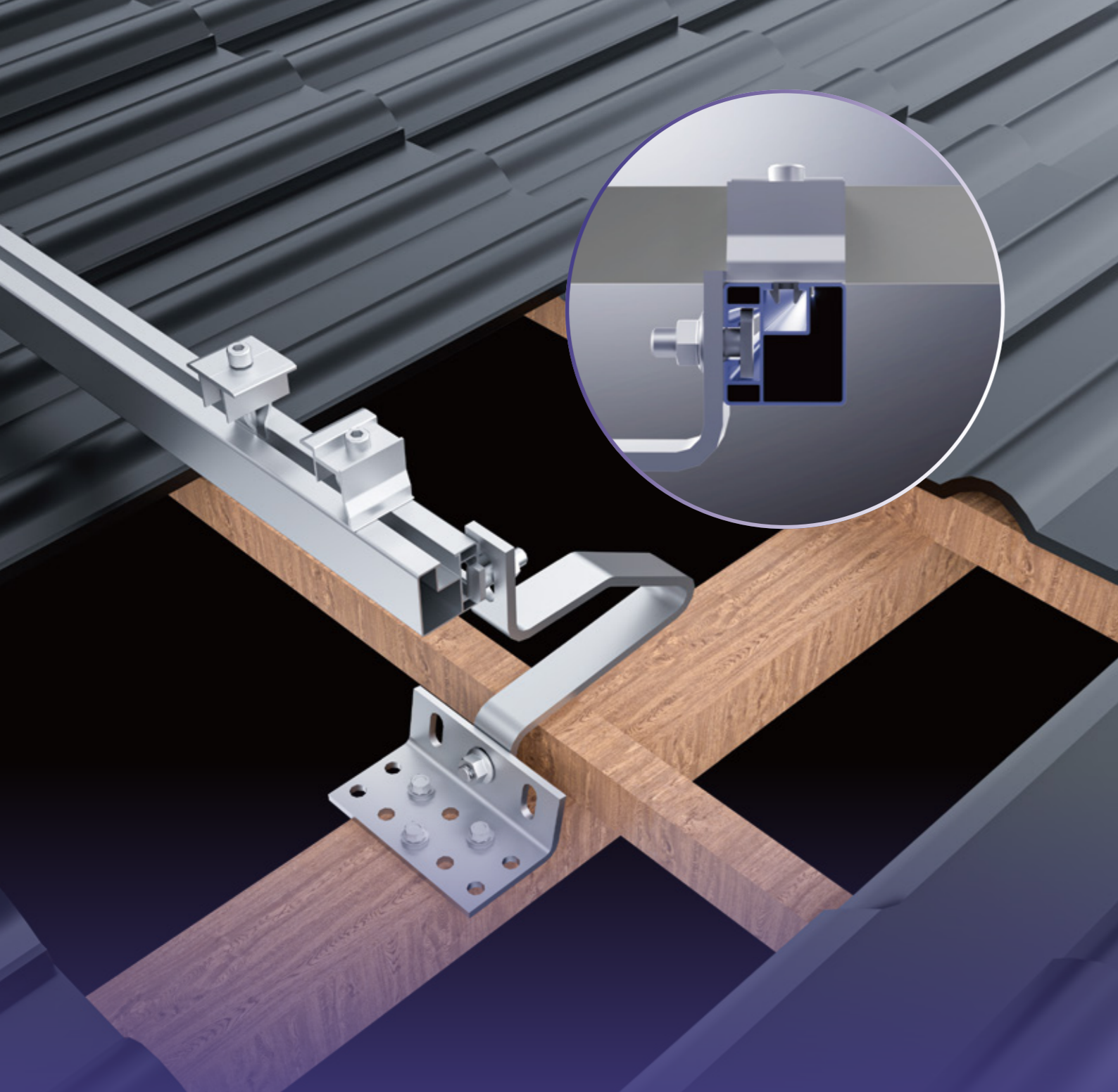
Item No. R067

Mid Clamps



End Clamps



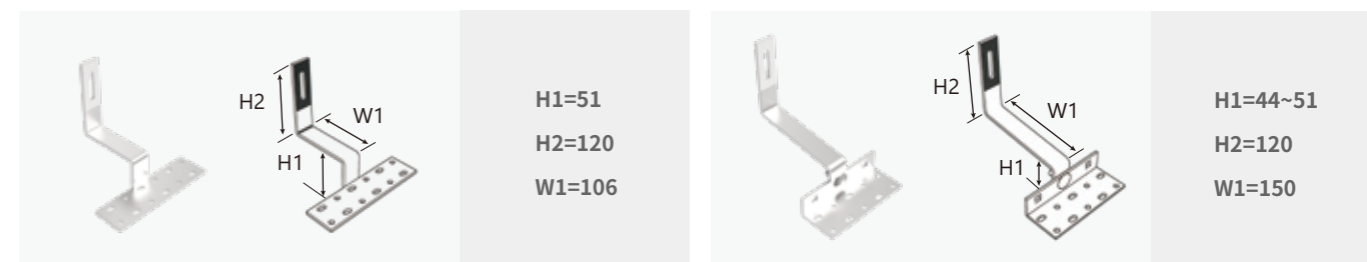


Tile Roof Mounting System III

- Suitable for both commercial and residential roof applications.
- High grade anodized aluminum and stainless steel components.
- Less accessories for easy installation, save the construction time and cost.

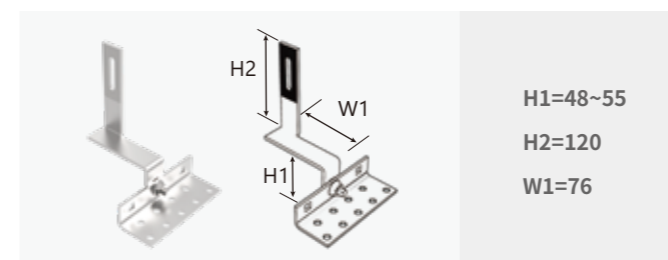
Details

Roof hook

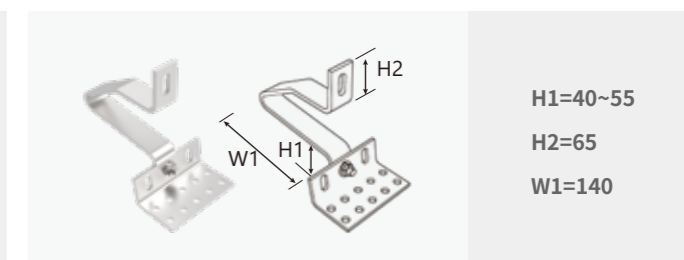


Item number	Thickness	Material
RH-304-0001	5mm	SUS 304
Roof decking	Carriage bolts	Wood screw
Tiled roof	/	/

Item number	Thickness	Material
RH-304-0018	5mm	SUS 304
Roof decking	Carriage bolts	Wood screw
Tiled roof	/	st6.3*80mm

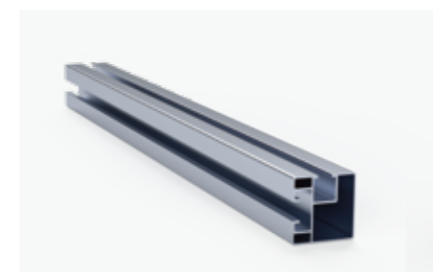


Item number	Thickness	Material
RH-304-0037	5mm	SUS 304
Roof decking	Carriage bolts	Wood screw
Tiled roof	M10*25*1	/



Item number	Thickness	Material
RH-304-0801	6mm	SUS 304
Roof decking	Carriage bolts	Wood screw
Tiled roof	M10*25*1	/

Rail



Item No.	W	H	Material
R066	40mm	40mm	AL 6005-T5

Long rails available for cutting to customized sizes

Mid & End Clamps



Material
AL 6005-T5

Universal module clamps

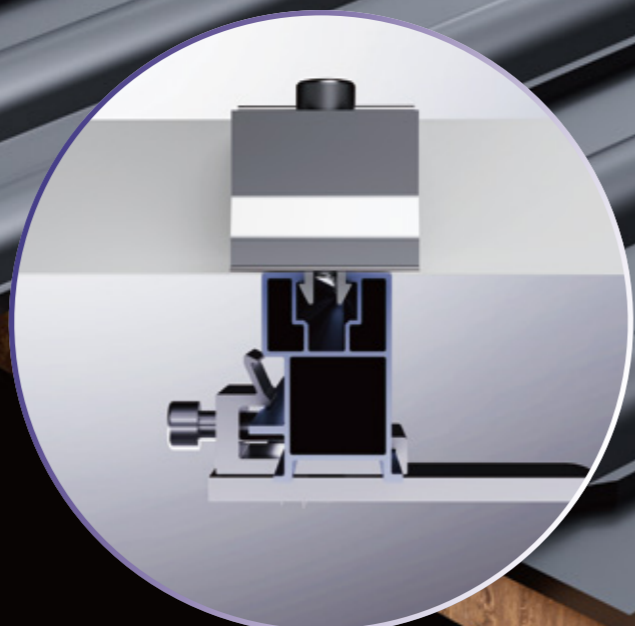
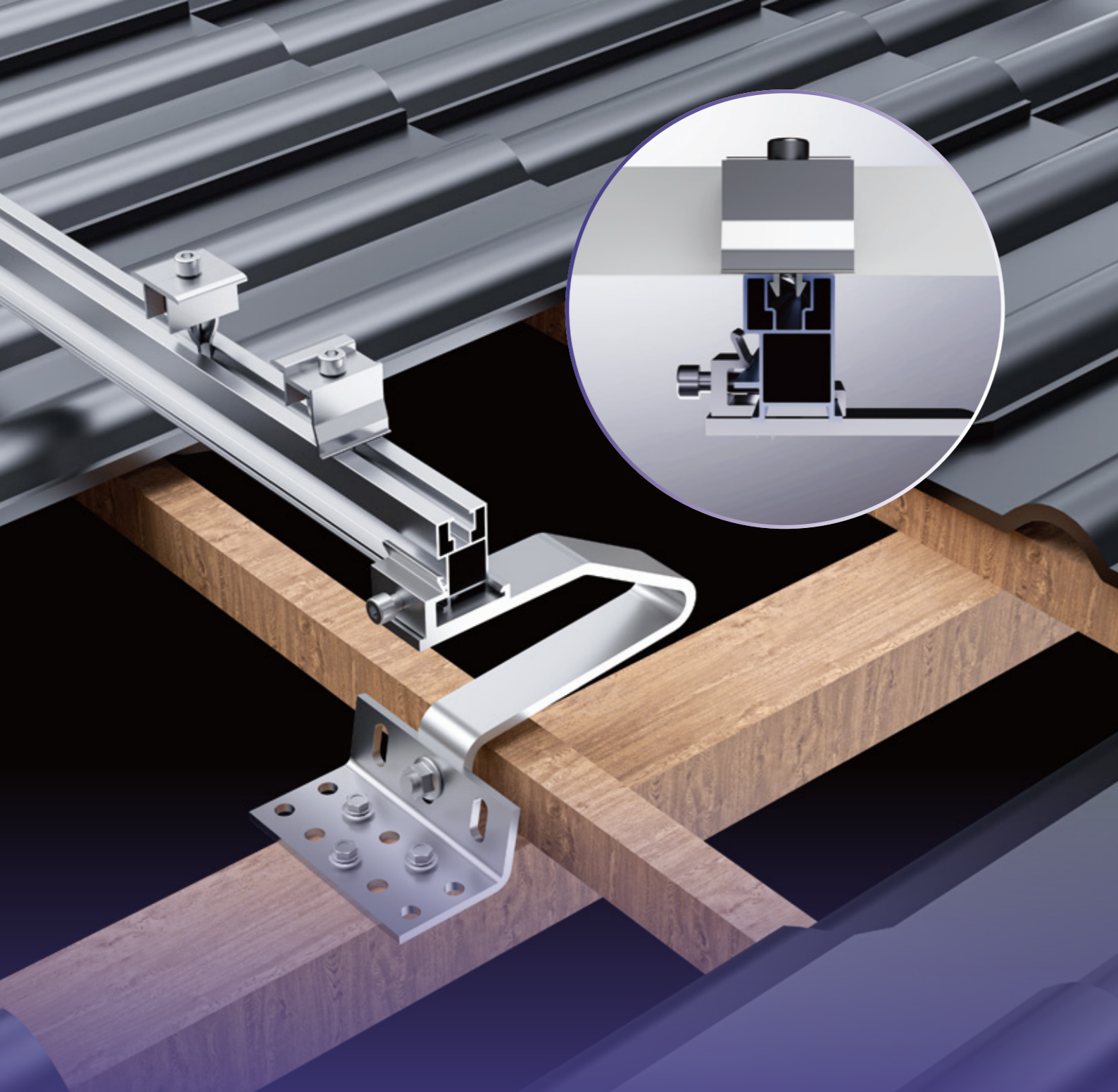
Rail Connector



Item No	Material
SR-0028	AL 6005-T5 + SUS 304

Parameters

Material: AL6005-T5, SUS304 / SUS410	Module orientation: Landscape and portrait
Surface treatment: Anodized	Applicable module thickness: 30mm-40mm
Module: Framed	Warranty: 10 years

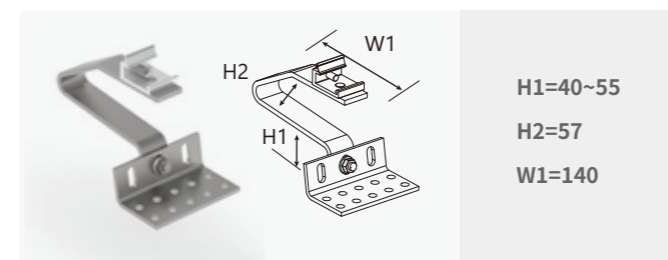


Tile Roof Mounting System II

- Robust design and high-quality materials.
- Highly corrosion resistant surface treatment.
- Pre-assembled components save time during onsite installation.

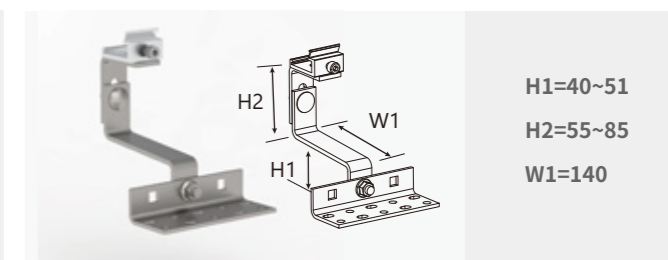
Details

Roof hook



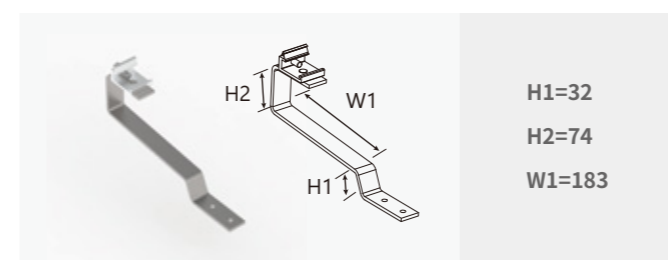
H1=40~55
H2=57
W1=140

Item number	Thickness	Material
RH-304-0802	6mm	SUS 304
Roof decking	Carriage bolts	Wood screw
Tiled roof	/	/



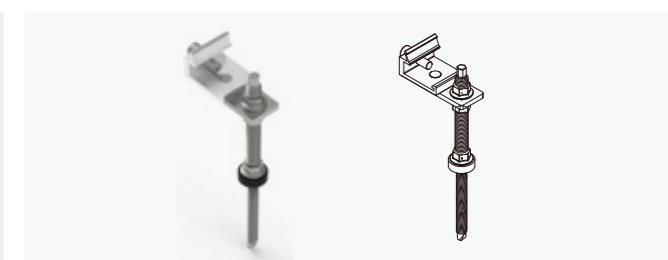
H1=40~51
H2=55~85
W1=140

Item number	Thickness	Material
RH-304-0041	5mm	SUS 304
Roof decking	Carriage bolts	Wood screw
Tiled roof	/	/



H1=32
H2=74
W1=183

Item number	Thickness	Material
RH-304-0016	5mm	SUS 304
Roof decking	Carriage bolts	Wood screw
Tiled roof	/	st6.3*80mm



Item number	Thickness	Material
FA-0141	/	SUS 304
Roof decking	Carriage bolts	Wood screw
Tiled roof	/	/

Rail



Item No.	W	H	Material
R067	30mm	47mm	AL 6005-T5

Long rails available for cutting to customized sizes

Mid & End Clamps



Material
AL 6005-T5

Universal module clamps

Rail Connector



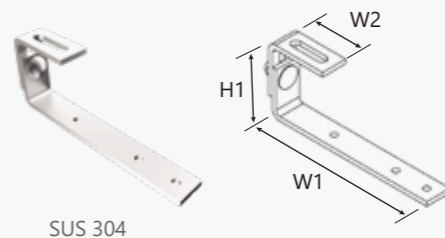
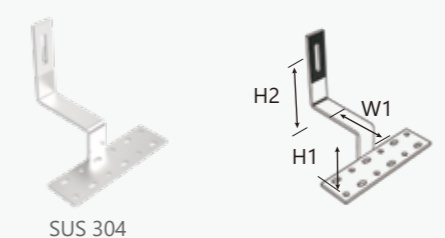
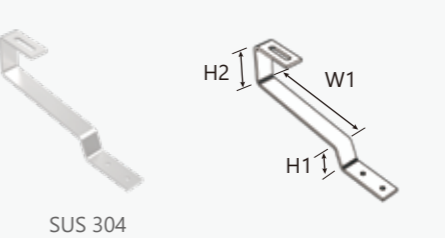
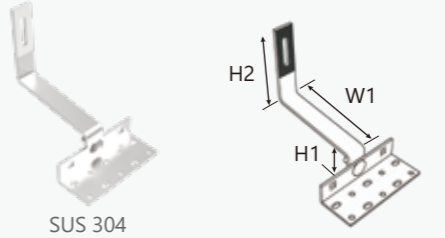
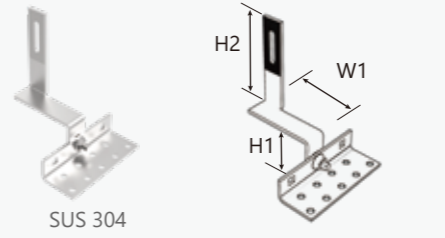
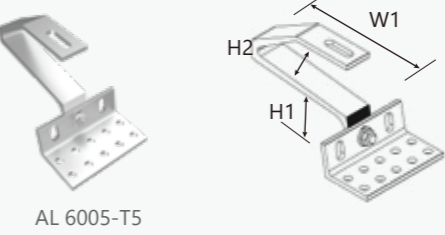
Item No	Material
SR-0075	AL 6005-T5 + SUS 304

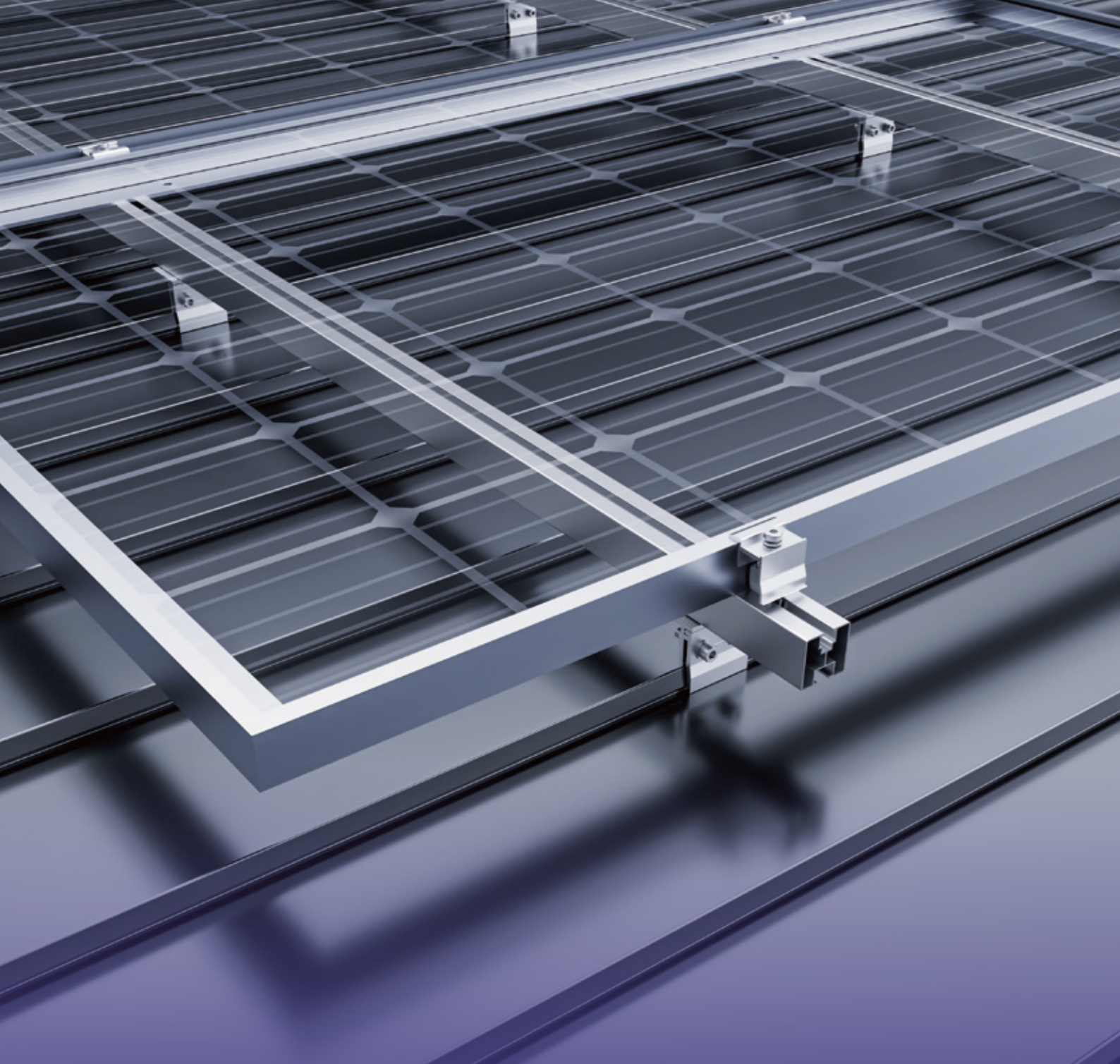
Parameters

Material: AL6005-T5, SUS304 / SUS410	Module orientation: Landscape and portrait
Surface treatment: Anodized	Applicable module thickness: 30mm-40mm
Module: Framed	Warranty: 10 years

Tile roof hooks

Type No.	Image&Technical	Dimension(mm)
RH-304-0041		H1=40~51 H2=55~85 W1=140
RH-304-0801		H1=40~55 H2=57 W1=140
RH-304-0802		H1=40~55 H2=57 W1=140
HA-0501		H1=40-55 H2=57 W1=138
RH-304-0202		H1=38~49 H2=39~45 W1=170
RH-304-0009		H1=45~82 H2=85~100 W1=115

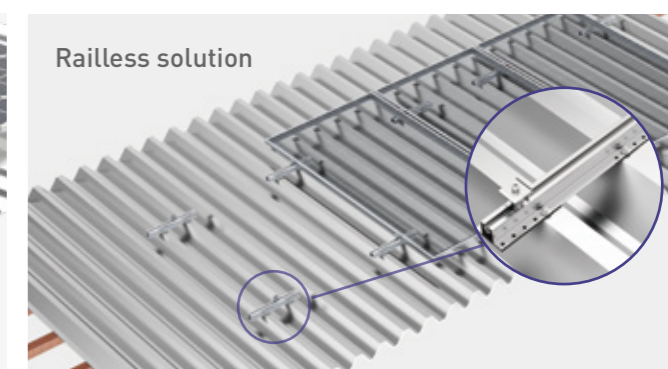
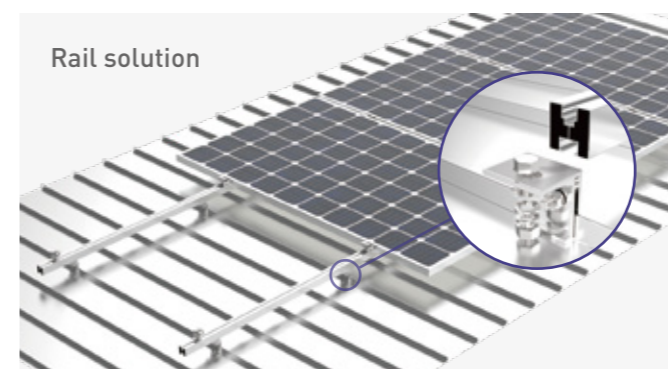
Type No.	Image&Technical	Dimension(mm)
RH-304-0038		H1=75-90 W1=255 W2=70
RH-304-0001		H1=51 H2=120 W1=106
RH-304-0016		H1=32 H2=74 W1=183
RH-304-0018		H1=44~51 H2=120 W1=150
RH-304-0037		H1=48~55 H2=120 W1=76
HA-0401		H1=40~55 H2=57 W1=140



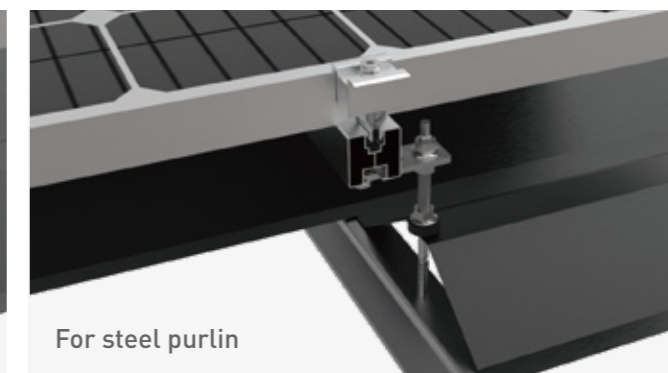
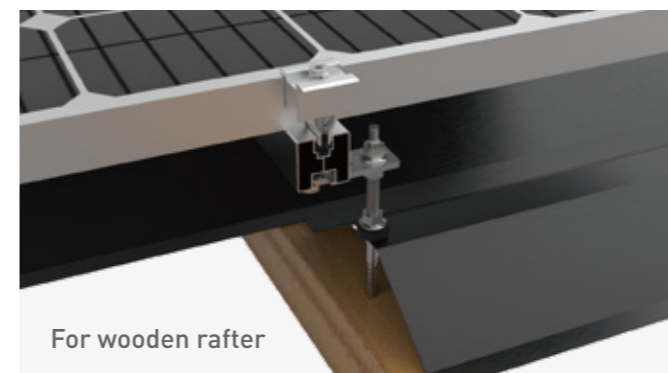
Metal Roof Mounting System

- Various roof clamps for different metal roof applications.
- Both rail or rail-free solution is available for specific need.
- Light weight system for quick and easy installation.

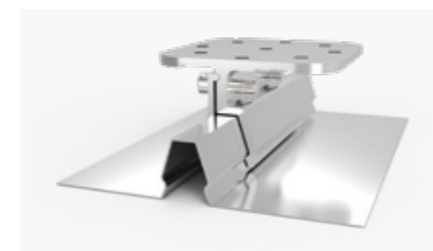
Standing Seam Solution



Hanger Bolt Solution



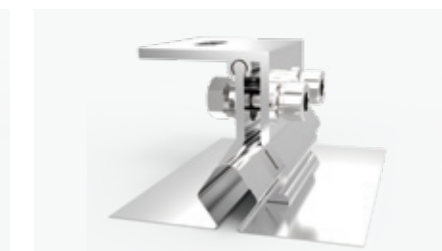
Various roof clamps



Item No.	Opening dimension
RF-0007	20.96mm



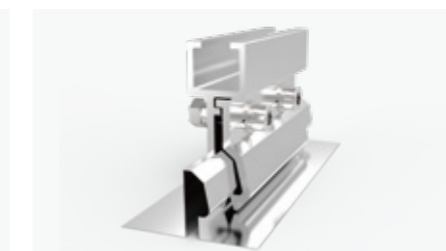
Item No.	Round seam dimension
RF-008	17.8mm



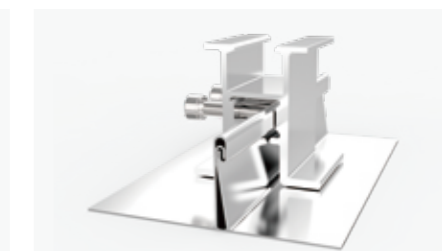
Item No.	Opening dimension
RF-0016	18.5mm



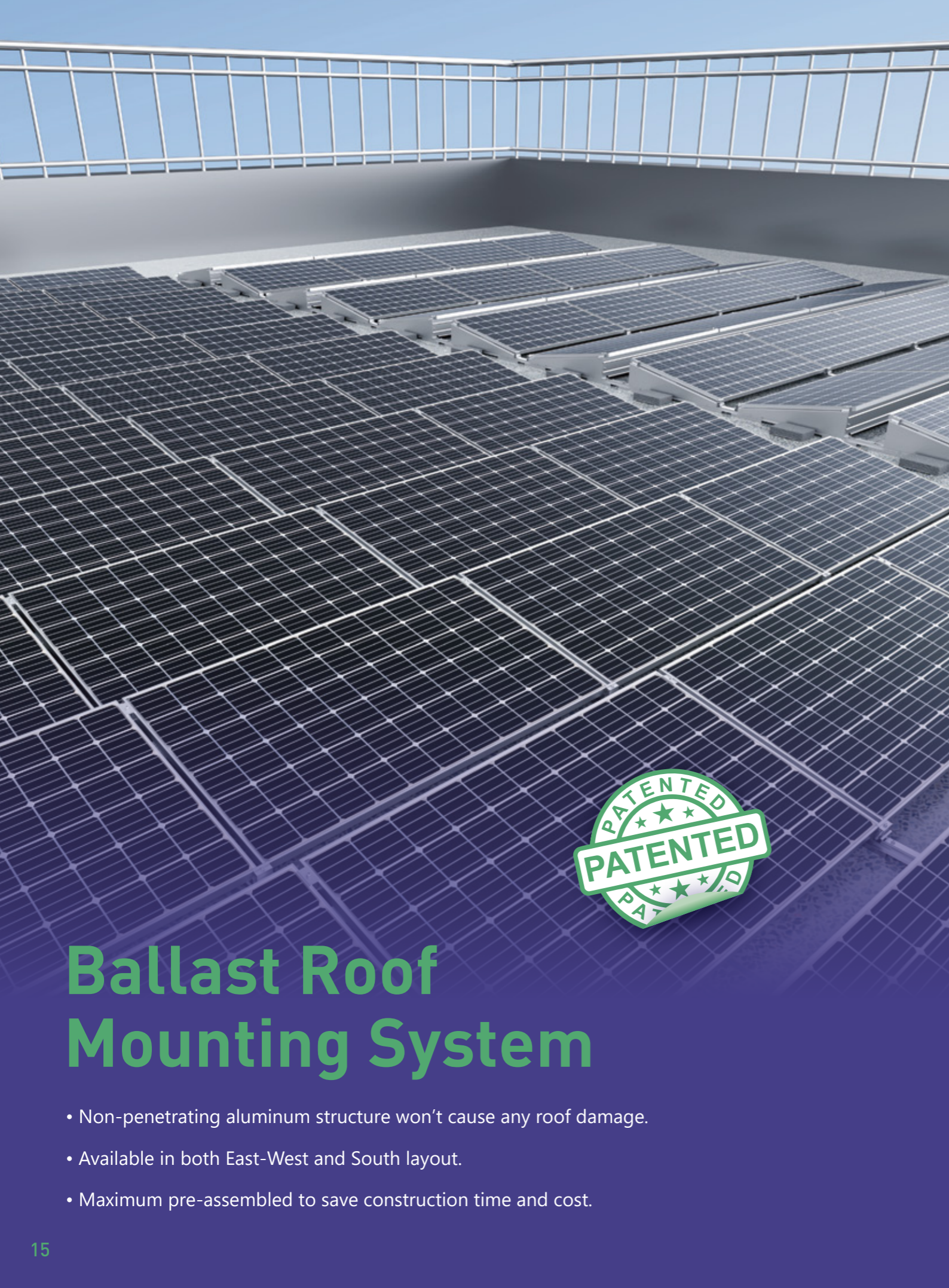
Item No.	Opening dimension
RF-0027	5.32mm



Item No.	Opening dimension
RF-0036	12.63mm



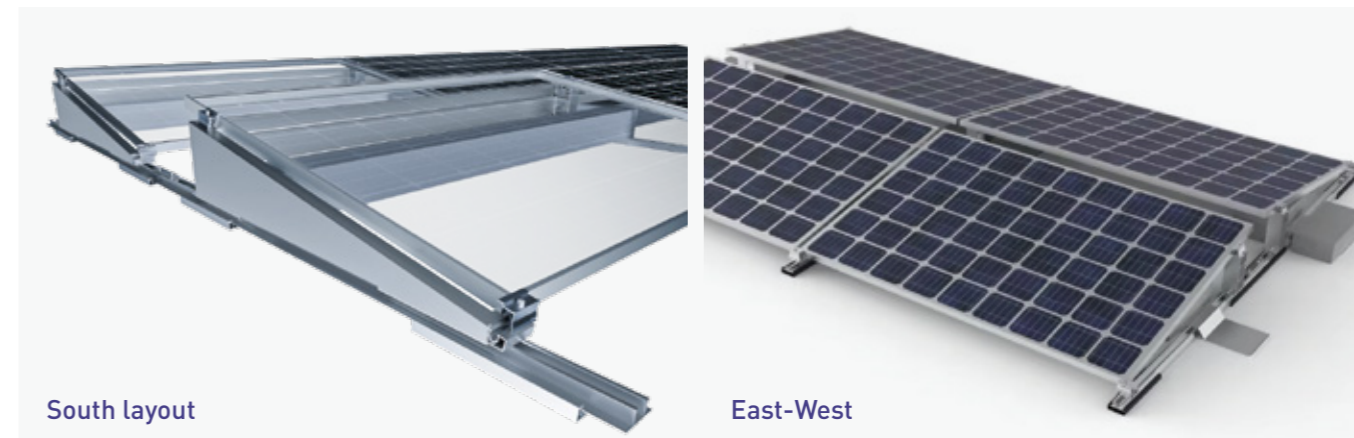
Item No.	Opening dimension
RF-0042	



Ballast Roof Mounting System

- Non-penetrating aluminum structure won't cause any roof damage.
- Available in both East-West and South layout.
- Maximum pre-assembled to save construction time and cost.

Details



South layout

East-West

Key Installation Steps

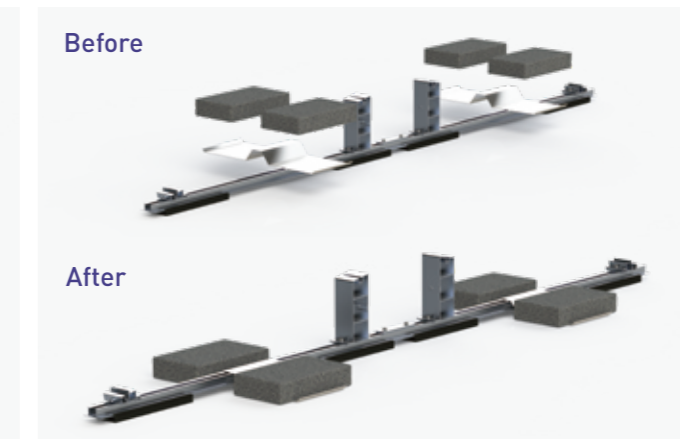
Install front and rear legs



Before

After

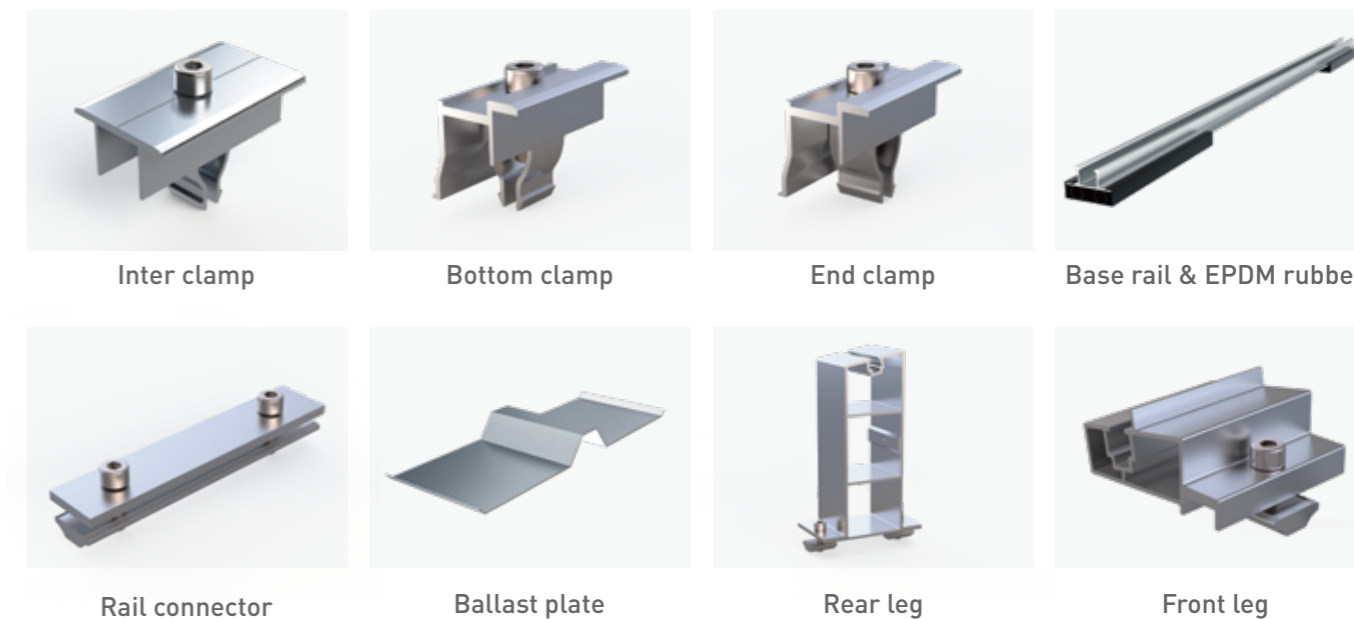
Install ballast plate and rear legs



Before

After

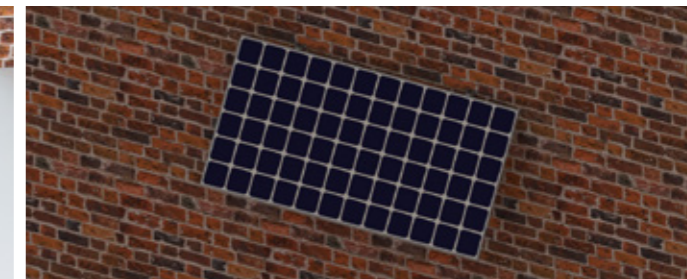
Components



Application scenarios



Open space



Fixed to the wall

Details



Front feet



Rear feet



Front view



Back view

Parameters

Material: AL6005-T5, SUS304

Length of solar module (mm): ≤2200mm

Thickness of solar module (mm): 30-50mm

Gross weight per bracket (kg): ≈1.9kg

Width of solar module (mm): ≤1340mm

Adjustable angle range: Customizable

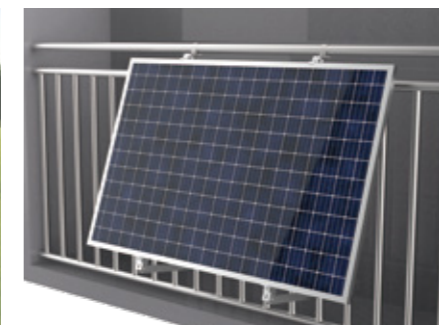
Adjustable Tilt Angle Easy Solar Bracket

- Lightweight and small size, easy to carry
- Simplified components for effortless installation
- Adjustable tilt for maximizing energy yield

Multiple scenarios



Garden



Balcony

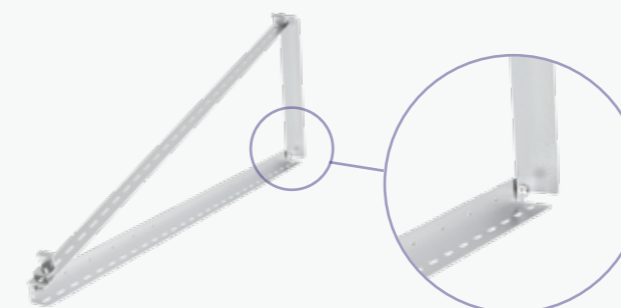


Flat roof

Details



Great flexibility to be adjusted at the best angle for maximum generation output



Quick assembly with the included stainless steel fasteners and precise pre-drilled holes



Lightweight system, ideal for easy installation and transportation

Universal Easy Solar Bracket – JL V1.0

- Simple and most economical solar application.
- Lightweight and stable aluminum alloy solar structure.
- Suit multiple scenarios including garden, balcony, railing, walls and etc.

Parameters

Material: AL6005-T5, SUS304

Gross weight per bracket (kg): ≈6.3

Length of solar module (mm): ≤2200

Width of solar module (mm): A≤1340mm

Thickness of solar module (mm): 30-50

Adjustable angle range: 15-28°



Garden



Flat Rooftop



Platform

Universal Easy Solar Bracket/Kit

Only bracket or all-in-one solar kit is available, composed of solar panel, micro inverter and angle-adjustable bracket, which is highly pre-assembled for achieving home energy independence. Aluminum structure is lightweight and easy to install on various scenario such as balcony, wall, railing or any open place.

Suitable For **Flexible Adjustment**

It can be adjusted through angle tilt (20°-35°) to obtain more energy according to local installation environments.

Suitable For **Multiple PV modules**

Width of PV module: $\leq 1180\text{mm}$
Thickness of PV module: 28-45mm



Black: ESUV400-WX030-B

Silver: ESUV400-WX030-S

Multiple scenarios



Garden

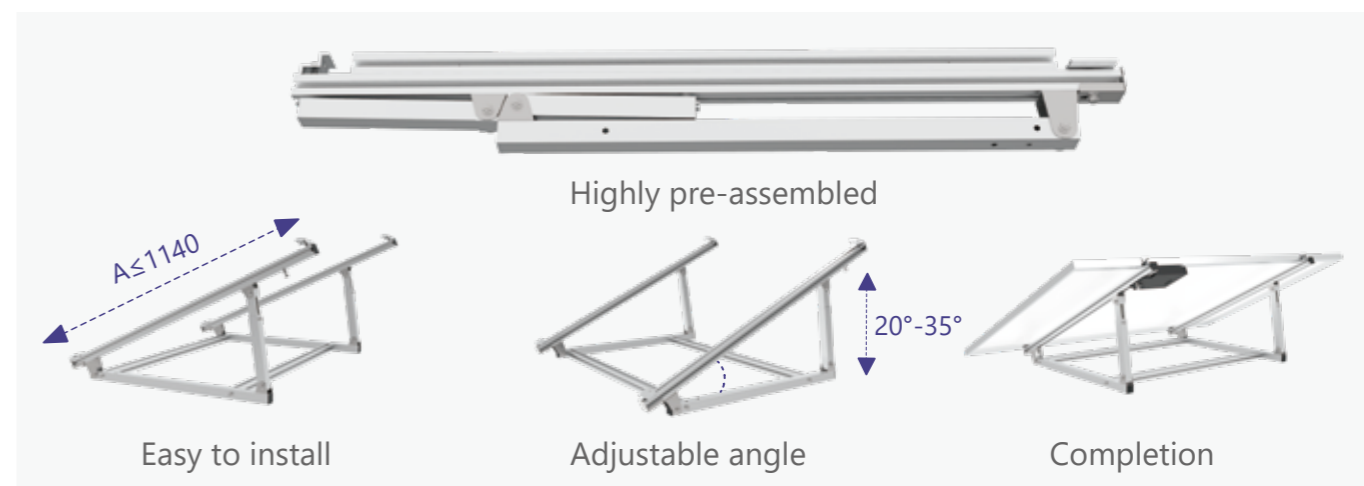


Balcony



Flat ground

Universal Easy Solar Bracket-UV (V3.2)



Universal Easy Solar Kit

Standard Configuration



Solar PV Panel



Solar Bracket



Micro Inverter

Optional configuration

① Power Meter

② AC Extension Cable

③ IP67 Waterproof Socket

④ Data transfer units

Packing information



Package for One Pcs
(Size:1760*1155*90mm)



312 Pcs Per 40 H

Application scenarios

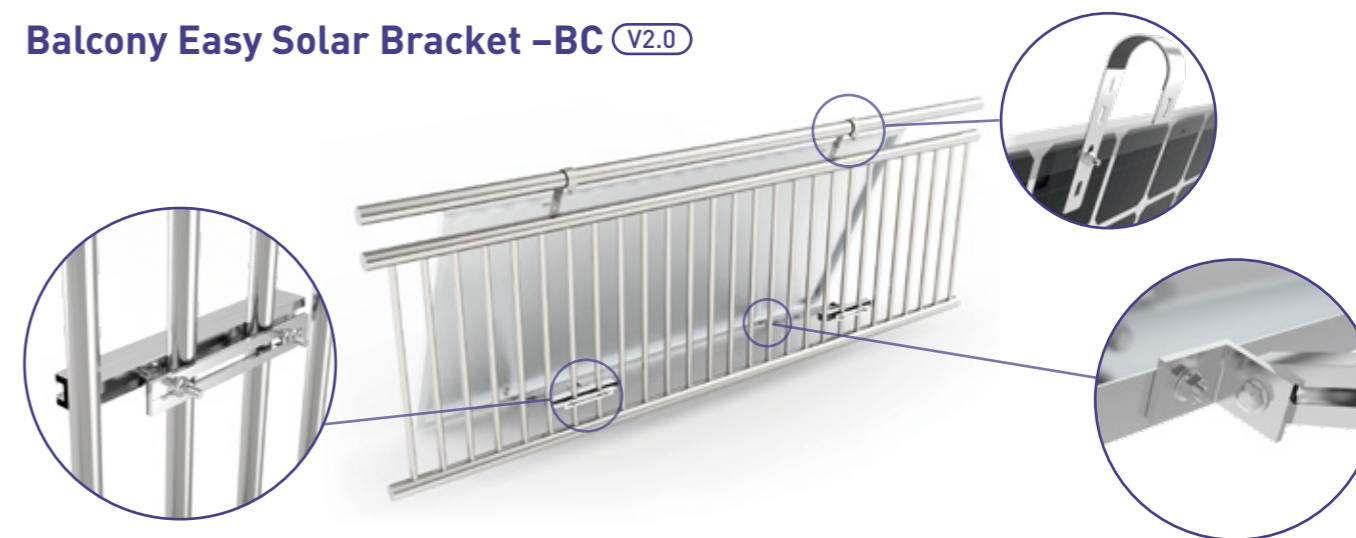


Fixed on balcony with 0°



Fixed on balcony with adjustable tilt 10°-30°

Balcony Easy Solar Bracket -BC (V2.0)



Balcony Easy Solar Kit

Standard Configuration



Solar PV Panel



Solar Bracket



Micro Inverter

Optional configuration

① Power Meter

② AC Extension Cable

③ IP67 Waterproof Socket

④ Data transfer units

Packing information



Package for One Pcs
(Size:1760*1155*90mm)



312 Pcs Per 40 H



Balcony Easy Solar Bracket/Kit

- Flexible fixing method, can be placed on the balcony with railing or wall.
- Highly anti-corrosion 6005-T5 aluminum alloy and robust 304 stainless steel.
- Completely pre-assembled, simply unfolded and secured to the balcony for Installation.

Plug and Play Solar Kit



Garden



Flat Rooftop



Platform



Kseng Easy Solar Kit is a plug-and-play system composed of solar panel, micro inverter and angle-adjustable bracket, which can be installed by yourself. Modular design without extra commission enables quicker and easier installation, the angle of the bracket can be adjusted to obtain the maximum power generation.

All-In-One design

Integrated with micro inverter, solar panel and bracket. Portable and foldable for multiple application.

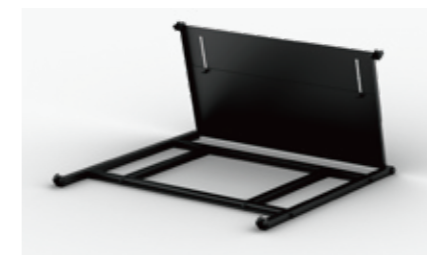
Easier installation

Play and plug connection, no requirement for professional installation, saving labor costs.

Standard Configuration



Solar PV Panel



Solar Bracket



Micro Inverter

Optional configuration



Power Meter



AC Extension Cable



IP67 Waterproof Socket



Data transfer units

Application scenarios



Flat ground



Balcony

Packing information



Package for One Pcs
(Size:1760*1155*90mm)



312 Pcs Per 40 H



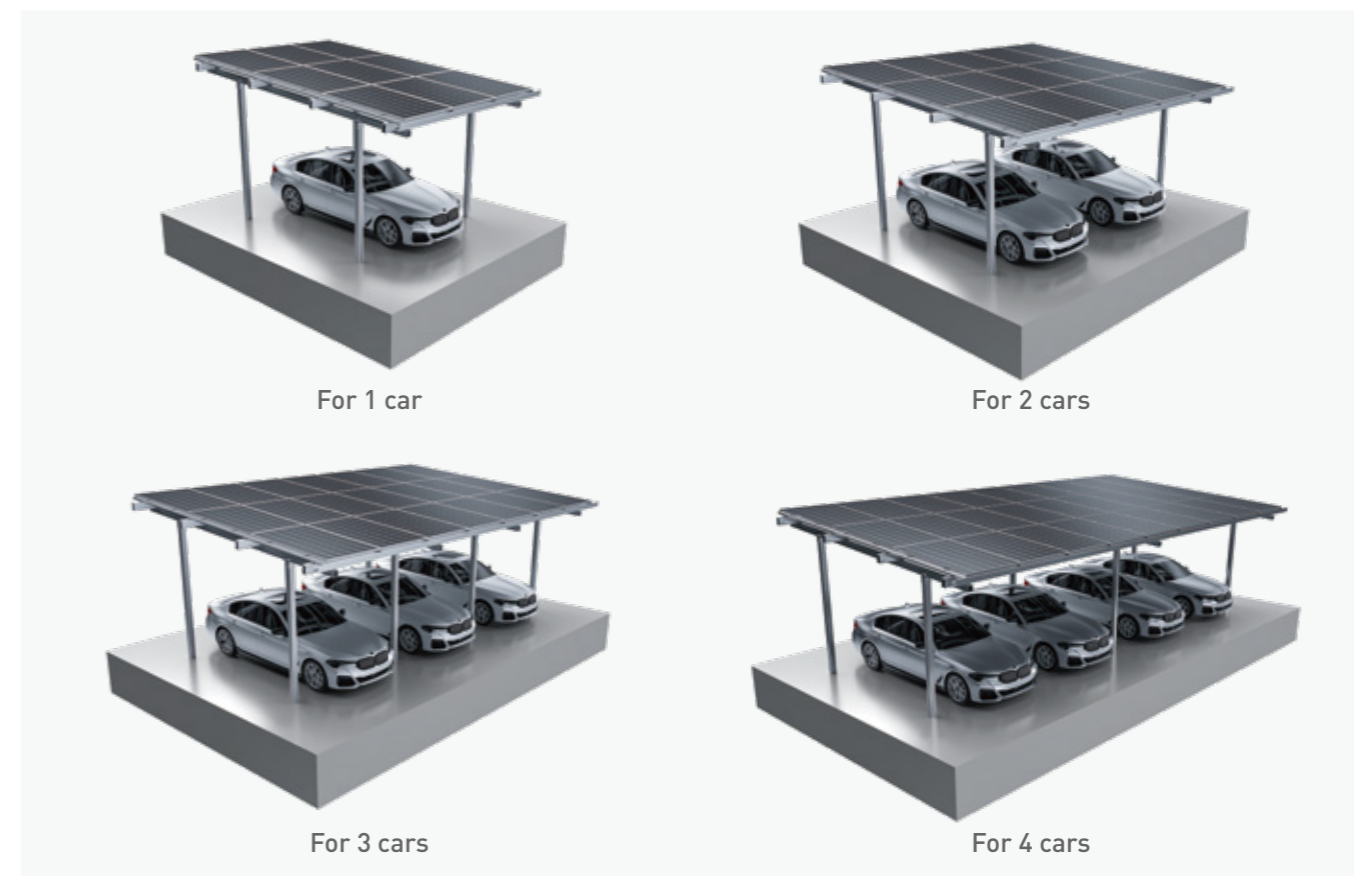
Waterproof Carport Mounting System



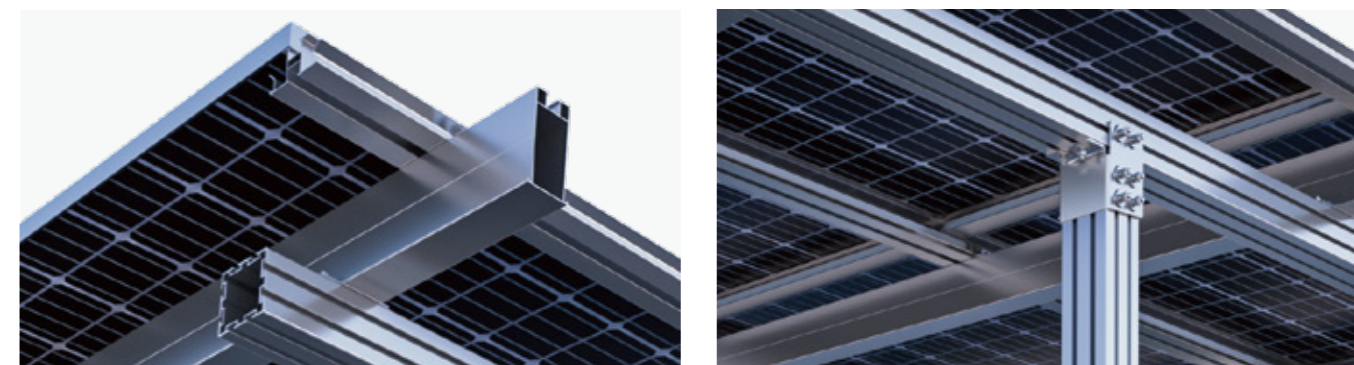
- Win-win solution**
Win-win solution to effectively use the space while generating electricity
- Flexible structure**
Suitable for different topographic conditions

- Waterproof design**
Fully waterproof design for framed module installation
- Optional foundation**
Various foundation options include precast concrete, bored pier and ground screw

Modular carport options



Details



Specifications

Material: AL6005-T5, Stainless Steel, SUS 304

Standard: AS/NZS 1170, JISC8955-2017, and other international standards

Warranty: 10 Years Warranty, 25 Years Service Life

Foundation: Screw or concrete foundation



Steel Ground Mounting System

△ Economical solution
Most economical ground mounting system

△ Competitive price
Made of lower-cost carbon steel & MAC steel

△ Suitable for any soil type
Suitable for any soil type, can be installed on even or uneven slopes

△ Modular design
Modular design allows for simple and easy installation

Components



Pillar



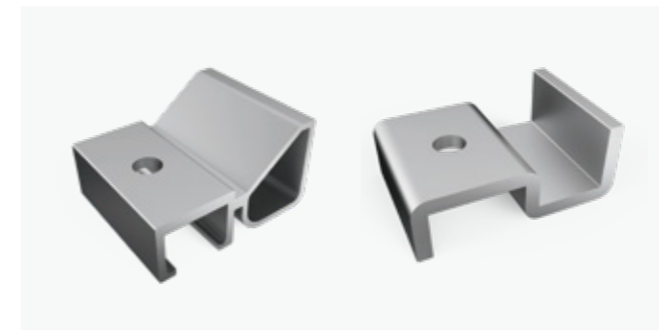
Beam



Rail



Rail Connector



Connector

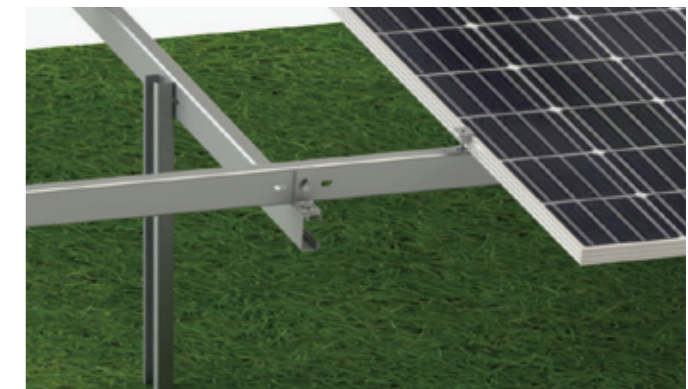


Mid Clamp



End Clamp

Details



Specifications

Material: Zn-Al-Mg coated steel or Q235B, carbon steel

Standard: AS/NZS 1170, JISC8955-2017, and other international standards

Warranty: 10 years warranty, 25 years service life

Foundation: Screw or concrete foundation



Energy Storage System Solution

Application scenarios



Family



Small store



Office



School



Rack-mounted Energy Storage System

Weight(Approx)(KG)	Approx:55kg
Dimension (W/D/H)(mm)	457*139*621mm
Installation Mode	Stack
IP Grade	Ip21



Wall-mounted Energy Storage System

Weight(Approx)(KG)	Approx:56kg
Dimension (W/D/H)(mm)	405*169*781mm
Installation Mode	Wall hanging
IP Grade	Ip21

Performance specifications

Model	KSS-05KWH512V100A-GF
Nominal Voltage	51.2V(16series)
Cell model/Configuration	3.2V100Ah/16S1P(51.2V)
Capacity(Ah)	100AH
Rated Energy(KWH)	5.12KWH
Usable Energy(KWH)	4.6KWH
Max.Charge/Discharge Current(A)	50A /100A
Voltage Range(Vdc)	48-56.5V
Scalability	Up to 10 parallel
Communication	RS232-PC,RS485-Inverter,Canbus-Inverter
Cycle Life	≥6000cycles@25 C ,90% DOD,60%EOL
Design Life	≥15 Years(25 C)

Global Projects

- Solar Fixed Structure / • Solar Tracker



Global Solar Exhibitions



2023 Shanghai



2023 Germany



2023 Brazil



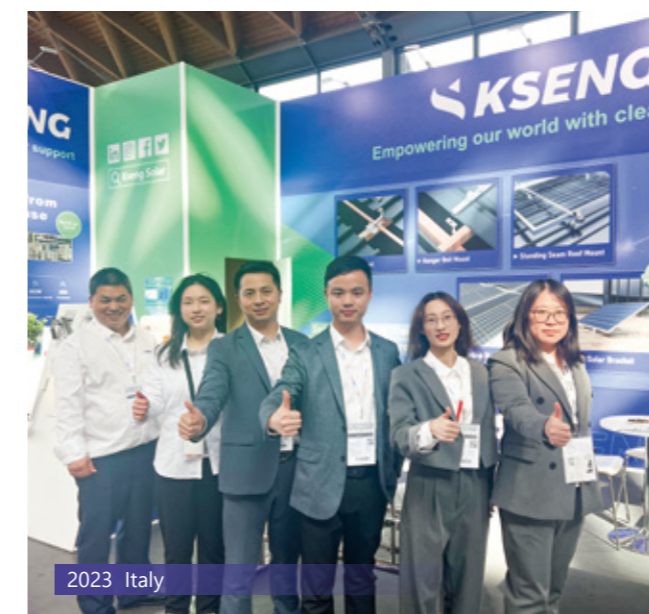
2023 France



2022 Melbourne, Australia



2023 Tokyo, Japan



2023 Italy



2023 Poland